



RESEARCH

Open Access

# Silencing of *RhoA* and *RhoC* expression by RNA interference suppresses human colorectal carcinoma growth in vivo

Haibo Wang<sup>1</sup>, Gang Zhao<sup>2</sup>, Xiangping Liu<sup>3\*</sup>, Aihua Sui<sup>3</sup>, Kun Yang<sup>3</sup>, Ruyong Yao<sup>3</sup>, Zongbao Wang<sup>1</sup>, Qiang Shi<sup>1</sup>

## Abstract

**Background:** *RhoA* and *RhoC* have been proved to be over-expressed in many solid cancers, including colorectal cancer. The reduction of *RhoA* and *RhoC* expression by RNA interference (RNAi) resulted growth inhibition of cancer cells. The present study was to evaluate the effect of silencing of *RhoA* and *RhoC* expression by RNAi on growth of human colorectal carcinoma (CRC) in tumor-bearing nude mice in vivo.

**Methods:** To establish HCT116 cell transplantable model, the nude mice were subcutaneously inoculated with  $1.0 \times 10^7$  HCT116 cells and kept growing till the tumor xenografts reached 5-7 mm in diameter. Then the mice were randomly assigned to three groups(seven mice in each group): (1) normal saline(NS) group, (2)replication-defective recombinant adenovirus carrying the negative control shRNA (Ad-HK) group and (3)replication-defective recombinant adenovirus carrying the 4-tandem linked *RhoA* and *RhoC* shRNAs (Ad-RhoA-RhoC) group. Ad-HK ( $4 \times 10^8$  pfu, 30 ul/mouse), Ad-RhoA-RhoC ( $4 \times 10^8$  pfu, 30 ul/mouse) or PBS (30 ul/mouse) was injected intratumorally four times once every other day. The weight and volumes of tumor xenografts were recorded. The levels of *RhoA* and *RhoC* mRNA transcripts and proteins in tumor xenografts were detected by reverse quantitative transcription polymerase chain reaction (QRT-PCR) and immunohistochemical staining respectively. The terminal deoxynucleotidyl transferase-mediated dUTP nick end labeling (TUNEL) assay was used to detect the death of cells.

**Results:** The xenografts in mice could be seen at 5th day from the implantation of HCT116 cells and all had reached 5-7 mm in size at 9th day. After injection intratumorally, the growth speed of tumor xenografts in Ad-RhoA-RhoC group was significantly delayed compared with those in NS and Ad-HK group( $P < 0.05$ ). The results of QRT-PCR showed that mRNA levels of *RhoA* and *RhoC* reduced more in Ad-RhoA-RhoC group than those in NS and Ad-HK group. The relative *RhoA* and *RhoC* mRNA transcripts were decreased to 48% and 43% respectively ( $P < 0.05$ ). Immunohistochemical analyses of tumor xenograft sections also revealed the decreased *RhoA* and *RhoC* expression in Ad-RhoA-RhoC group. TUNEL assay also showed higher death of tumor xenograft tissue cells in Ad-RhoA-RhoC group.

**Conclusion:** Recombinant adenovirus mediated *RhoA* and *RhoC* shRNA in tandem linked expression may inhibit the growth of human colorectal tumor xenografts in vivo. These results indicate that *RhoA* and *RhoC* might be potential targets for gene therapy in colorectal cancer.

## Background

Colorectal carcinoma (CRC) is one of the most common cancers and accounts for about 10% of all new cancer cases and cancer deaths in the US in recent two years [1,2]. And the incidence is increasing rapidly in

developing countries including China[3]. Despite surgical resection coupled with systemic chemotherapy, about half of newly diagnosed colorectal cancer patients will still die of this disease due to tumor recurrence and metastasis[4]. The initiation, development, local invasion and distal metastasis for tumor are regulated by multiple genes, whose expressions are determined by either internal or external factors. Therefore, elucidation of those factors and the pattern of their expression may help to

\* Correspondence: xiangpingliu@126.com

<sup>3</sup>Central Laboratory of Molecular Biology, Affiliated Hospital of Qingdao University Medical College, Qingdao, 266003, China  
Full list of author information is available at the end of the article

understand the mechanism of carcinogenesis and metastasis of colorectal carcinoma.

*RhoA* and *RhoC* have been known to be involved in regulating multiple aspects of cell migration, affecting the different components of the cytoskeleton as well as cell-substrate adhesion and possibly matrix remodeling [5,6]. *RhoA* and *RhoC* proteins have implicated them as important factors in promoting the uncontrolled proliferation and invasive and metastatic properties of cancer cells [7], however, it is poorly understood how they are activated in cancer cells. Studies have demonstrated that the over-expression of *RhoA* and *RhoC* in most solid malignancies including colorectal cancer is more frequently than in normal tissue [8-13]. Therefore, specific inhibiting the functions of *RhoA* and *RhoC* is predicted to be of great therapeutic benefits.

Previous studies have shown that interfering the expression of *RhoA* and *RhoC* using small interfering RNA (siRNA) approaches inhibited the proliferation and invasion of some cancer cells [14-17]. Our previous studies have also demonstrated that the over-expression of *RhoA* and *RhoC* occurred in colorectal cancer tissues from Chinese patients and *RhoA* and *RhoC* shRNAs in tandem linked expression could markedly inhibit the invasion and migration potentials of colorectal cancer cells [18,19]. In this study, we evaluated the inhibitory efficacy of *RhoA* and *RhoC* shRNAs in tandem linked expression in vivo. Our results showed that the recombinant adenovirus-mediated siRNA inhibited the growth of colorectal cancer cell grafts implanted in nude mice, which suggests that *RhoA* and *RhoC* might serve as potential targets for gene therapy in colorectal cancer and such shRNA-induced in tandem linked RNA interference might be more effective in targeting multiple genes in cancer therapy.

## Methods

### Experimental Animals

Twenty-one athymic nude male BALB/c mice (4-5 weeks old, 15-18 g), obtained from Beijing Experimental Animal Center, China, were maintained in a specific pathogen free, temperature-controlled isolation conditions, fed with sterilized food and autoclaved water. Animal breeding, care and experiment procedures were approved by ethical and humane committee of Affiliated Hospital of Qingdao University Medical College and carried out strictly in accordance with the related ethical regulations.

### Cell Line and Cell Culture

The human colon cancer cell line HCT116 was purchased from China Centre for Type Culture Collection. The cells were grown in McCoy's 5A medium, Modified (Sigma), supplemented with 10% of fetal bovine serum

(Hyclone, USA) at 37°C in a humidified atmosphere of 5% CO<sub>2</sub>. The cells were always detached using 0.25% trypsin and 0.02% ethylene diamine tetra acetic acid (EDTA).

### In vivo Tumor Xenograft Model

To establish the transplantable model, the human colon cancer cells in logarithm growth phase were harvested and washed twice with PBS.  $1.0 \times 10^7$  cells in 200  $\mu$ L of PBS with a viability of >95% tested by staining with trypan blue were injected subcutaneously into the right flank of each mouse. All nude mice were observed to generate tumors for up to 9 days after the injection. When tumor nodules reached 5-7 mm in diameter, tumor model was successfully established and mice were randomly assigned to the following 3 groups (seven mice in each group): (1) normal saline (NS) group, (2) Ad-HK group and (3) Ad-RhoA-RhoC group. Ad-HK ( $4 \times 10^8$  pfu, 30  $\mu$ L/mouse), Ad-RhoA-RhoC ( $4 \times 10^8$  pfu, 30  $\mu$ L/mouse) or PBS (30  $\mu$ L/mouse) was injected intratumorally at several points four times once every other day, with the accumulated doses of  $1.6 \times 10^9$  pfu. The tumor sizes were determined every other day by external measurements with a vernier caliper and calculated the tumor volume and plotted against time [The tumor volume =  $ab^2/2$ , where a and b are the larger and smaller diameter, respectively]. Ten days after the final injection, the tumors were dissected and their weights and volumes were measured. Then, each harvested tumor was divided into two parts, one was used for detecting the mRNA expression of the related genes and the other was used for immunohistochemical analysis as described below.

### Quantitative RT-PCR for RhoA and RhoC in Xenograft Tumors

Total RNA was extracted from -80°C frozen transplanted tumor samples, dissected from nude mice, using Trizol reagent (Invitrogen, USA) and reverse transcribed into cDNA using the PrimeScript RT-PCR kit (TaKaRa Bio Inc., Shiga, Japan), according to the manufacturer's instructions. To assess the *RhoA* and *RhoC* gene expression, we used real-time fluorescence quantitative PCR analysis based on the TaqMan probe method. The probe contains 6-carboxy-fluorescein (FAM) as a fluorescent reporter dye, and 6-carboxytetramethyl-rhodamine (TAMRA) as a quencher for its emission spectrum. The primers, TaqMan probes and PCR parameters were performed same as reported previously by us [18,19].

### Histopathological and Immunohistochemical Study

Half of the implanted tumor tissues which were dissected from nude mice were fixed in 10% formalin,

embedded in paraffin and serially cut into 4  $\mu$ m-thick sections for hematoxylin-eosin and immunohistochemical staining. Briefly, tissue sections were baked, deparaffinized and microwaved at 98°C for 10 minutes in citrate buffer (0.01 M citric acid, pH6.0). After blocking the endogenous peroxidase by immersing the sections in 3% H<sub>2</sub>O<sub>2</sub>, the sections were incubated with primary antibodies directing against human *RhoA* (sc-32039, 1:50; Santa Cruz) and *RhoC* (sc-12116, 1:50; Santa Cruz). Expression of *RhoA* or *RhoC* protein in tissue sections was detected with Anti-goat IgG/HRP Detection Kit(PV-6003; Zhongshan Biotechnology Limited Company, Beijing, China). The tissue sections were then counterstained with hematoxylin.

#### Terminal Deoxynucleotidyl Transferase-mediated dUTP Nick End-labeling (TUNEL) Assay

Assessment of cell death was performed by TUNEL method using an *in situ* cell death detection kit conjugated with horse-radish peroxidase (POD) (Roche Applied Science, Indianapolis, IN, USA), according to the manufacturer's instructions. Five equal-sized fields in tissue sections were randomly chosen and analyzed under the Leica DMI 4000B(Leica, Germany) light microscope. Density was evaluated in each positive staining field, yielding the density of dead cells (cell death index).

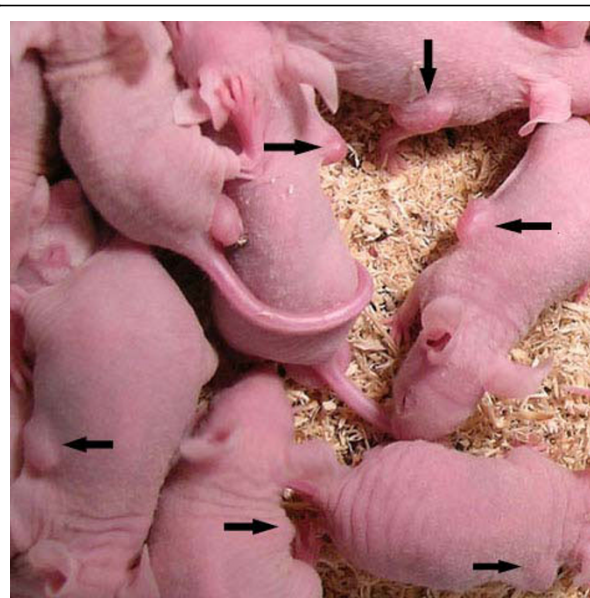
#### Statistical Analysis

All data were shown by mean  $\pm$  SD. Statistical analyses were performed using SPSS statistical software (SPSS Inc., Chicago, Illinois). Differences between two groups were assessed using a *t* test. A *P* value less than 0.05 was considered statistically significant.

## Results

### Ad-RhoA-RhoC-siRNA Inhibits Tumor Development in Nude Mice

Tumors in the nude mice could be seen at 5th day from the implantation of HCT116 cells and all tumors had reached 5-7 mm in size at 9th day. The successful rate of tumor implantation was 100%(Figure 1). After intratumorally injection, the growth speed of tumors in the three group was quite different. As shown in figure 2, the tumors in NS and Ad-HK group grew rapidly. In contrast, tumors in Ad-RhoA-RhoC group were significantly delayed. The dissected tumors in the NS and Ad-HK group had volumes of  $(699.62 \pm 190.56)\text{mm}^3$  and  $(678.81 \pm 155.39)\text{mm}^3$ , which were  $5.05 \pm 0.48$ -fold and  $4.58 \pm 0.94$ -fold larger than the starting volume, whereas in the Ad-RhoA-RhoC group, the tumors had a volume of  $(441.38 \pm 63.03)\text{mm}^3$ , increased only  $2.38 \pm 0.56$ -fold (Figure 3). Tumor growth delay was statistically significant ( $P < 0.05$ ). In addition, the mean tumor weight in



**Figure 1** Tumor-bearing nude mice with 100% of tumor implantation rate.

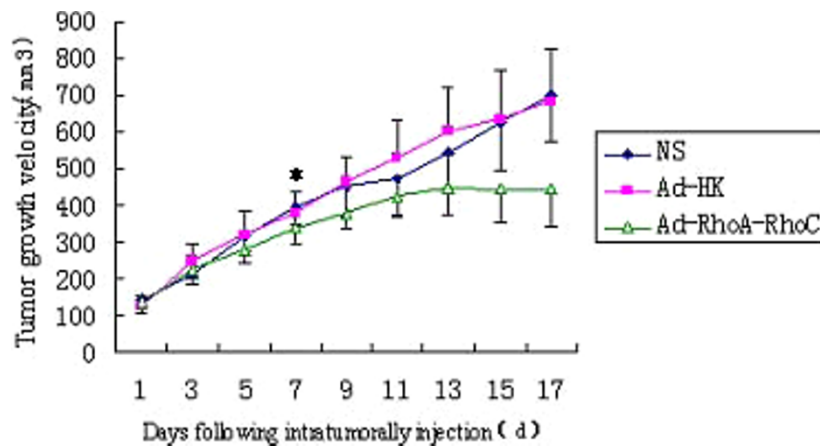
NS, Ad-HK and Ad-RhoA-RhoC group was  $(0.75 \pm 0.22)$  g,  $(0.78 \pm 0.22)$  g and  $(0.36 \pm 0.13)$  g, respectively. These data demonstrated that injection of Ad-RhoA-RhoC was able to slow down the growth of HCT116-derived xenografts.

### Effect of Ad-RhoA-RhoC on Expression of RhoA and RhoC mRNA in Implanted Tumors

PCR product electrophoresis analysis clearly demonstrated a single RhoA band at 158 bp, RhoC band at 136 bp and GAPDH band at 150 bp, which were the expected sizes (figure not shown). Real-time fluorescence quantitative PCR analyses showed the mRNA levels of *RhoA* and *RhoC* were significantly decreased in Ad-RhoA-RhoC group compared with the NS group ( $P < 0.05$ , Table 1). The relative *RhoA* and *RhoC* mRNA expression in Ad-RhoA-RhoC group to the NS group were only about 48% and 43%, respectively. However, there was no significant difference between NS group and Ad-HK group ( $P > 0.05$ ). The results showed that the *RhoA* and *RhoC* genes were specifically silenced in Ad-RhoA-RhoC group.

### Immunohistochemical Staining for RhoA and RhoC in Xenograft Tumor

The results of hematoxylin-eosin staining for the pathological changes in tumors were observed under light microscopy (Figure 4). Many necrotic regions were found in the tumors in all the three groups. But in the Ad-RhoA-RhoC group, cancer cells showed intense positive staining with smaller cell sizes and contracted



**Figure 2** Growth curve of subcutaneous implanted tumors in nude mice treated with NS, Ad-HK, or Ad-RhoA-RhoC. Tumor volume is plotted against time elapsed. A significant delay in tumor growth is seen in the group treated with Ad-RhoA-RhoC. Data are presented as means $\pm$ SD (n = 7). \*  $P < .05$ , from this point onwards.

nucleus. Immunohistochemical staining results for *RhoA* and *RhoC* were shown in Figure 5. In Ad-RhoA-RhoC group, the cancer cells of tumor tissues stained very weakly for *RhoA* and *RhoC*, in comparison with NS group and Ad-HK group. Through quantitative data analysis using the Leica Qwin image processing and analysis software (Leica Imaging Solution Ltd., Version 3.3.1, Cambridge, UK), the integrated optical density (IOD) values of tumor tissues of NS group, Ad-HK

group and Ad-RhoA-RhoC group were  $148.02 \pm 9.62$ ,  $133.44 \pm 7.24$ ,  $73.51 \pm 7.06$  for *RhoA* and  $134.53 \pm 4.51$ ,  $130.74 \pm 3.78$ ,  $76.23 \pm 2.17$  for *RhoC*, respectively. (Figure 5).

#### Death Assay of Cells of Tumor Tissues by TUNEL

As shown in Figure 6, cancer cells of tumor tissues in Ad-RhoA-RhoC group demonstrated extensive cell death, whereas in NS group and Ad-HK group resulted



**Figure 3** Comparison of the size of harvested implanted tumors in nude mice treated with NS, Ad-HK, or Ad-RhoA-RhoC. A: fresh anatomized B: formalin-fixed.

**Table 1 The level of *RhoA* and *RhoC* transcripts in implanted tumors in different groups**

Group	<i>RhoA</i>		<i>RhoC</i>	
	$\Delta\Delta CT$	Rel. to NS <sup>a</sup>	$\Delta\Delta CT$	Rel. to NS <sup>a</sup>
NS	0 ± 0.22	1 (0.86-1.16)	0 ± 0.26	1 (0.84-1.20)
Ad-HK	0.09 ± 0.18	0.94(0.83-1.06)	0.12 ± 0.15	0.92(0.83-1.02)
Ad-RhoA-RhoC	1.05 ± 0.27	0.48(0.40-0.58)	1.23 ± 0.14	0.43(0.39-0.47)

a. Data are expressed as the mean  $2^{-\Delta\Delta CT}$  (range).

in less tumor cell death. These results indicate that the induction of cell death by *RhoA-RhoC* siRNA treatment is highly specific.

### Discussion

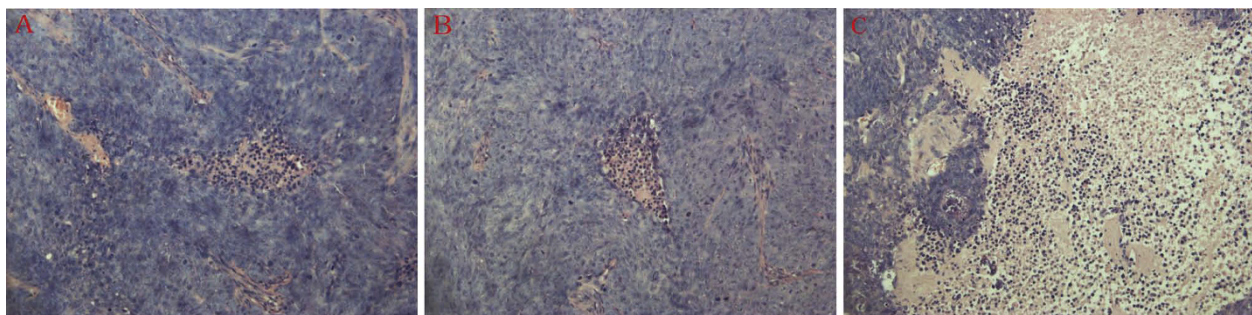
It has been known that the initiation, development, invasion and metastasis for colorectal carcinoma are controlled by many different genes and various signal transduction pathways and involved in many important biological processes. *RhoA* and *RhoC*, the Rho-related members, have been identified to be involved in diverse signal transduction pathways that control essential cellular functions such as cell growth, cell differentiation, cytoskeletal organization, intracellular vesicle transport and secretion[20]. Despite the high homology of *RhoA* and *RhoC*, *RhoA* has been shown to regulate the activities of multiple transcription factors, most of which are implicated in the cancer progression [21] by modulating cancer cell adhesion, contraction, movement, release of cellular adhesion, degradation of extra-cellular matrix, and invasion into blood or lymph vessels [22,23], while *RhoC* contributes to tumor development, especially to invasion and metastasis of cancer cells [24,25]. But the molecular mechanisms were still unclear.

Previous studies including ours have demonstrated that the overexpression or up-regulation of *RhoA* and *RhoC* in colorectal cancer was significantly higher than those in the corresponding paratumor and normal tissues, suggesting the involvement of these two genes in the onset, development and disease progression. of

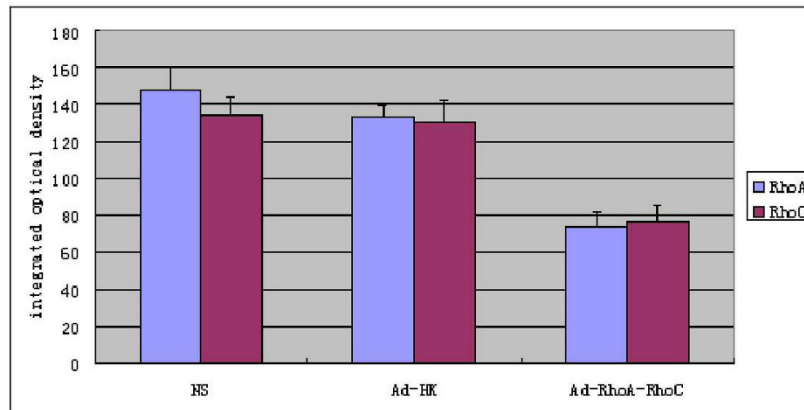
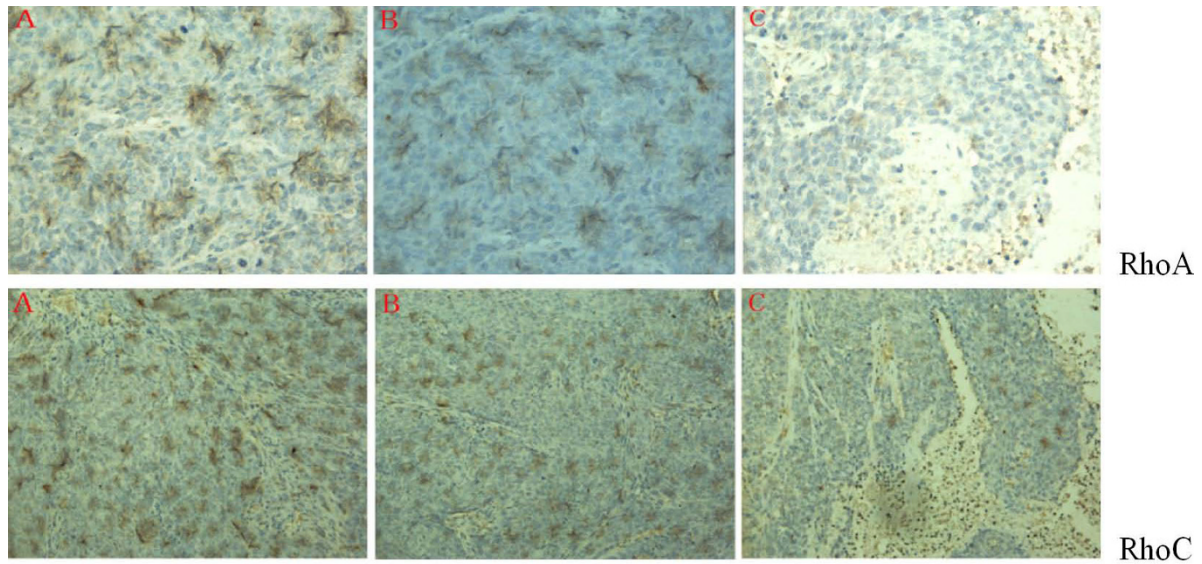
colorectal carcinoma [11,12,18,26]. Moreover, some reports showed that down-regulating the expression of *RhoA* and *RhoC* using small interfering RNA (siRNA) approaches may inhibit the proliferation and invasiveness of cancer cells [14-17,19,27]. Therefore, specific inhibiting the abnormal expression of *RhoA* and *RhoC* may be an effective strategy for CRC therapy.

Now, RNA interference has become widely used *in vivo* knockdown of genes in cancer therapy. However, safe, feasible and effective delivery methods *in vivo* are still of critical importance[28]. Viral vectors do possess significant advantages in cancer therapy *in vivo* and gene therapy with intratumorally injected recombinant adenoviral vectors mediating sequence-specific gene silencing offers the potential to restrict therapeutic gene expression in the tumor. Thus, the use of RNAi in a stable viral vector system, such as the adenovirus, is a highly desirable strategy for stable gene knockdown in anticancer gene therapy[29-31].

Our previous *in vitro* data have demonstrated that our recombinant adenovirus mediated *RhoA* and *RhoC* shRNA in tandem linked expression successfully inhibits the expression of *RhoA* and *RhoC* in CRC cell line HCT116 and proliferation of CRC cells. On the basis of *in vitro* results, the present study was aimed to determine whether the recombinant adenovirus mediated 4-tandem linked shRNA construct targeting *RhoA* and *RhoC* genes may inhibit the growth of human colorectal cancer cell graft implanted in nude mice *in vivo*. Our results indicated that the growth speed of the implanted tumors in NS, Ad-HK and Ad-RhoA-RhoC groups was quite different after intratumoral injection of NS, Ad-HK and Ad-RhoA-RhoC respectively. The tumor weight and the tumor volume were significantly declined in Ad-RhoA-RhoC group. RT-PCR and immunohistochemistry results showed that the mRNA and protein expressions of *RhoA* and *RhoC* were markedly decreased in Ad-RhoA-RhoC group. The TUNEL study also disclosed that increased dead cells in this group compared with



**Figure 4 Tumor tissues in nude mice in different treated groups (HE, ×200) A: NS group; B: Ad-HK group; C: Ad-RhoA-RhoC group.** Tumor cells were intensely stained with hematoxylin and showed smaller sizes. Necrotic regions were mainly eosin stained.

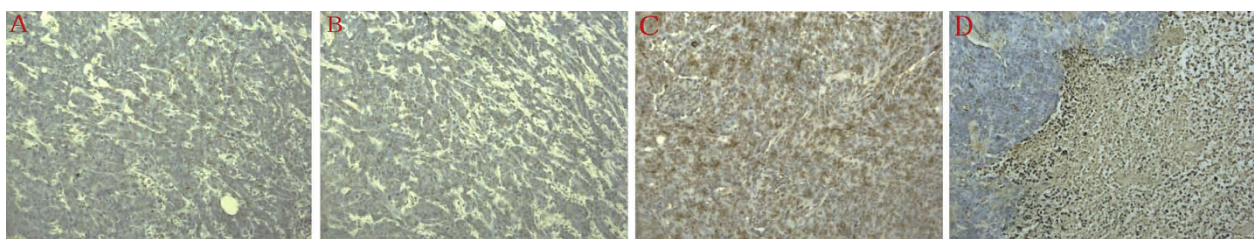


**Figure 5** Immunohistochemistry reaction for *RhoA* and *RhoC* protein in implanted tumor tissues of nude mice in different treated groups (*RhoA*,  $\times 400$ , *RhoC*,  $\times 200$ ). Fig 5 also showed the integrated optical density (IOD) values of the implanted tumor tissues. A: NS group; B: Ad-HK group; C: Ad-RhoA-RhoC group. The positive cells were stained brown, using antibodies to *RhoA* or *RhoC*.

those in NS and Ad-HK group. These results showed that the recombinant adenovirus mediated *RhoA* and *RhoC* shRNA in tandem linked expression could inhibit the growth of tumors in CRC-bearing nude mice.

To our knowledge, this is the first study that 4-tandem linked shRNA construct targeting *RhoA* and *RhoC*

genes can inhibit the growth of colorectal tumors *in vitro* and *in vivo*. *RhoA* and *RhoC* gene may be promising molecular targets for colorectal cancer gene therapy. Although, there are three mice in NS and Ad-HK group died one or two days before the harvest day in our study, we think this is irrelative to the adenovirus



**Figure 6** Cell death in implanted tumor tissues. Cell death was detected by TUNEL assay in implanted tumors treated with NS(A), Ad-HK(B), or Ad-RhoA-RhoC(C and D). Original magnification,  $\times 200$ . The nuclei of positive cell were stained brown.

application but owing to their large tumors or cachexia. All the data we observed about the adenovirus application shows no any serious side effects (data not shown), which means that adenoviral vector-based delivery of in tandem linked shRNAs is a safe and efficient therapeutic approach. There weren't any differences such as body weight, implanted tumor weight, etc. between NS and Ad-HK group. However, we have kept doing research work on comparing the inhibitory effects of multiple shRNAs expression vectors with single shRNA expression vector. And further research work should be done to examine the downstream effectors of RhoA and RhoC; such as ROCK-I and ROCK-II, being most associated with metastasis and progress in cancer, which will be benefit for exploring the possible molecular mechanisms of RhoA and RhoC in tumor inhibition.

#### Acknowledgements

This work was supported by grants from the Natural Scientific Foundation of Shandong Province (Grant code: 2006ZRB14274) and the Research Program of Qingdao South District Municipal Science and Technology Commission.

#### Author details

<sup>1</sup>Department of General Surgery, Affiliated Hospital of Qingdao University Medical College, Qingdao, 266003, China. <sup>2</sup>Department of Anorectum, Affiliated Hospital of Qingdao University Medical College, Qingdao, 266003, China. <sup>3</sup>Central Laboratory of Molecular Biology, Affiliated Hospital of Qingdao University Medical College, Qingdao, 266003, China.

#### Authors' contributions

WHB and LXP designed the research; YK and SAH carried out the molecular genetic studies; WZB and SQ participated in the nude mice studies; ZG and YRY discussed the results and analyzed data; WHB and LXP wrote the paper. All authors read and approved the final manuscript.

#### Competing interests

The authors declare that they have no competing interests.

Received: 30 July 2010 Accepted: 9 September 2010

Published: 9 September 2010

#### References

1. Jemal A, Siegel R, Ward E, Murray T, Xu J, Thun MJ: **Cancer statistics, 2007.** *CA Cancer J Clin* 2007, **57**:43-66.
2. Jemal A, Siegel R, Ward E, Hao Y, Xu J, Murray T, Thun MJ: **Cancer statistics, 2008.** *CA Cancer J Clin* 2007, **58**:71-96.
3. Parkin DM, Bray F, Ferlay J, Pisani P: **Global cancer statistics, 2002.** *CA Cancer J Clin* 2005, **55**:74-108.
4. Wilke HJ, Van Cutsem E: **Current treatments and future perspectives in colorectal and gastric cancer.** *Ann Oncol* 2003, **14**:ii49-55.
5. Fritz G, Just I, Kaina B: **Rho GTPases are over-expressed in human tumors.** *Int J Cancer* 1999, **81**:682-787.
6. Ridley AJ: **Rho GTPases and cell migration.** *J Cell Sci* 2001, **114**:2713-2722.
7. Whitehead IP, Zohn IE, Der CJ: **Rho GTPase-dependent transformation by G protein-coupled receptors.** *Oncogene* 2001, **20**:1547-1555.
8. Kleer CG, van Golen KL, Zhang Y, Wu ZF, Rubin MA, Merajver SD: **Characterization of RhoC expression in benign and malignant breast disease: a potential new marker for small breast carcinomas with metastatic ability.** *Am J Pathol* 2002, **160**:579-584.
9. Horiuchi A, Imai T, Wang C, Ohira S, Feng Y, Nikaido T, Konishi I: **Up-regulation of small GTPases, RhoA and RhoC, is associated with tumor progression in ovarian carcinoma.** *Lab Invest* 2003, **83**:861-870.
10. Li XR, Ji F, Ouyang J, Wu W, Qian LY, Yang KY: **Overexpression of RhoA is associated with poor prognosis in hepatocellular carcinoma.** *Eur J Surg Oncol* 2006, **32**:1130-1134.

11. Bellovin DI, Simpson KJ, Danilov T, Maynard E, Rimm DL, Oettgen P, Mercurio AM: **Reciprocal regulation of RhoA and RhoC characterizes the EMT and identifies RhoC as a prognostic marker of colon carcinoma.** *Oncogene* 2006, **25**:6959-6967.
12. Takami Y, Higashi M, Kumagai S, Kuo PC, Kawana H, Koda K, Miyazaki M, Harigaya K: **The activity of RhoA is correlated with lymph node metastasis in human colorectal cancer.** *Dig Dis Sci* 2008, **53**:467-473.
13. Faried A, Faried LS, Usman N, Kato H, Kuwano H: **Clinical and prognostic significance of RhoA and RhoC gene expression in esophageal squamous cell carcinoma.** *Ann Surg Oncol* 2007, **14**:3593-3601.
14. Liu N, Bi F, Pan Y, Sun L, Xue Y, Shi Y, Yao X, Zheng Y, Fan D: **Reversal of the Malignant Phenotype of Gastric Cancer Cells by Inhibition of RhoA Expression and Activity.** *Clin Cancer Res* 2004, **10**:6239-6247.
15. Shimada T, Nishimura Y, Nishiura T, Rikitake Y, Hirase T, Yokoyama M: **Adenoviral Transfer of Rho Family Proteins to Lung Cancer Cells Ameliorates Cell Proliferation and Motility and Increases Apoptotic Change.** *Kobe J Med Sci* 2007, **53**:125-134.
16. Sun HW, Tong SL, He J, Wang Q, Zou L, Ma SJ, Tan HY, Luo JF, Wu HX: **RhoA and RhoC-siRNA inhibit the proliferation and invasiveness activity of human gastric carcinoma by Rho/PI3K/Akt pathway.** *World J Gastroenterol* 2007, **13**:3517-3522.
17. Fan YM, Pang CP, Harvey AR, Cui Q: **Marked effect of RhoA-specific shRNA-producing plasmids on neurite growth in PC12 cells.** *Neurosci Lett* 2008, **440**:170-175.
18. Wang HB, Liu XP, Liang J, Yang K, Sui AH, Liu YJ: **Expression of RhoA and RhoC in colorectal carcinoma and its relations with clinicopathological parameters.** *Clin Chem Lab Med* 2009, **47**:811-817.
19. Liu XP, Wang HB, Yang K, Sui AH, Shi Q, Qu S: **Inhibitory effects of adenovirus mediated tandem expression of RhoA and RhoC shRNAs in HCT116 cells.** *J Exp Clin Cancer Res* 2009, **28**:52.
20. Hall A: **The cellular functions of small GTP-binding proteins.** *Science (Wash DC)* 1990, **249**:635-640.
21. Benitah SA, Valeron PF, van Aelst L, Marshall CJ, Lacal JC: **Rho GTPases in human cancer: an unresolved link to upstream and downstream transcriptional regulation.** *Biochim Biophys Acta* 2004, **1705**:121-132.
22. Fiordalisi JJ, Keller PJ, Cox AD: **PRL tyrosine phosphatases regulate rho family GTPases to promote invasion and motility.** *Cancer Res* 2006, **66**:3153-3161.
23. Kusama T, Mukai M, Iwasaki T, Tatsuta M, Matsumoto Y, Akedo H, Inoue M, Nakamura H: **3-hydroxy-3-methylglutaryl-coenzyme A reductase inhibitors reduce human pancreatic cancer cell invasion and metastasis.** *Gastroenterology* 2002, **122**:308-317.
24. Ikoma T, Takahashi T, Nagano S, Li YM, Ohno Y, Ando K, Fujiwara T, Fujiwara H, Kosai K: **A definitive role of RhoC in metastasis of orthotopic lung cancer in mice.** *Clin Cancer Res* 2004, **10**:1192-1200.
25. Wang W, Yang LY, Huang GW, Lu WQ, Yang ZL, Yang JQ, Liu HL: **Genomic analysis reveals RhoC as a potential marker in hepatocellular carcinoma with poor prognosis.** *Br J Cancer* 2004, **90**:2349-2355.
26. Wang H, Chen Y, Cao D, Zhang Y, Meng R, Lu J: **RhoA gene expression in colorectal carcinoma.** *Zhonghua Yi Xue Za Zhi* 2002, **82**:348-351.
27. Pille JY, Denoyelle C, Varet J, Bertrand JR, Soria J, Opolon P, Lu H, Pritchard LL, Vannier JP, Malvy C, Soria C, Li H: **Anti-RhoA and anti-RhoC siRNAs inhibit the proliferation and invasiveness of MDA-MB-231 breast cancer cells in vitro and in vivo.** *Mol Ther* 2005, **11**:267-274.
28. Duxbury MS, Whang EE: **RNA interference: a practical approach.** *J Surg Res* 2004, **117**:339-344.
29. Ganly I, Kim D, Eckhardt G, Rodriguez GI, Soutar DS, Otto R, Robertson AG, Park O, Gully ML, Heise C, Von Hoff DD, Kaye SB: **A phase I study of Onyx-015, an E1B attenuated adenovirus, administered intratumorally to patients with recurrent head and neck cancer.** *Clin Cancer Res* 2000, **6**:798-806.
30. Hubberstey AV, Pavliv M, Parks RJ: **Cancer therapy utilizing an adenoviral vector expressing only E1A.** *Cancer Gene Ther* 2002, **9**:321-329.
31. Palacios G, Crawford HC, Vaseva A, Moll UM: **Mitochondrially targeted wild-type p53 induces apoptosis in a solid human tumor xenograft model.** *Cell Cycle* 2008, **7**:2584-2590.

doi:10.1186/1756-9966-29-123

**Cite this article as:** Wang et al.: Silencing of RhoA and RhoC expression by RNA interference suppresses human colorectal carcinoma growth in vivo. *Journal of Experimental & Clinical Cancer Research* 2010 **29**:123.