



RESEARCH

Open Access

The expression and role of protein kinase C (PKC) epsilon in clear cell renal cell carcinoma

Bin Huang^{1†}, Kaiyuan Cao^{2†}, Xiubo Li³, Shengjie Guo⁴, Xiaopeng Mao¹, Zhu Wang², Jintao Zhuang¹, Jincheng Pan¹, Chengqiang Mo¹, Junxing Chen^{1*} and Shaopeng Qiu^{1*}

Abstract

Protein kinase C epsilon (PKC ϵ), an oncogene overexpressed in several human cancers, is involved in cell proliferation, migration, invasion, and survival. However, its roles in clear cell renal cell carcinoma (RCC) are unclear. This study aimed to investigate the functions of PKC ϵ in RCC, especially in clear cell RCC, to determine the possibility of using it as a therapeutic target. By immunohistochemistry, we found that the expression of PKC ϵ was up-regulated in RCCs and was associated with tumor Fuhrman grade and T stage in clear cell RCCs. Clone formation, wound healing, and Borden assays showed that down-regulating PKC ϵ by RNA interference resulted in inhibition of the growth, migration, and invasion of clear cell RCC cell line 769P and, more importantly, sensitized cells to chemotherapeutic drugs as indicated by enhanced activity of caspase-3 in PKC ϵ siRNA-transfected cells. These results indicate that the overexpression of PKC ϵ is associated with an aggressive phenotype of clear cell RCC and may be a potential therapeutic target for this disease.

Keywords: Protein kinase C epsilon, Renal cell carcinoma, Clear cell

Background

Renal cell carcinoma (RCC) accounts for approximately 3% of all malignant tumors in adults, which afflicts about 58,240 people and causes nearly 13,040 deaths each year in USA [1]. RCCs are classified into five major subtypes: clear cell (the most important type, accounts for 82%), papillary, chromophobe, collecting duct, and unclassified RCC [2]. Operation is the first treatment choice for RCC; however, some patients already have metastasis at the time of diagnosis and are resistant to conventional chemotherapy, radiotherapy, and immunotherapy [3]. Thus, a more effective anti-tumor therapy is urgently needed.

Protein kinase C (PKC), a family of phospholipid-dependent serine/threonine kinases, plays an important role in intracellular signaling in cancer [4-8]. To date, at least 11 PKC family members have been identified. PKC isoenzymes can be categorized into three groups by their structural and biochemical properties: the

conventional or classical ones (α , β I, β II, and γ) require Ca^{2+} and diacylglycerol (DAG) for their activation; the novel ones (δ , ϵ , η , and θ) are dependent on DAG but not Ca^{2+} ; the atypical ones (ζ and λ/ι) are independent of both Ca^{2+} and DAG [4-6]. Among them, PKC ϵ is the only isoenzyme that has been considered as an oncogene which regulates cancer cell proliferation, migration, invasion, chemo-resistance, and differentiation via the cell signaling network by interacting with three major factors RhoA/C, Stat3, and Akt [9-13]. PKC ϵ is overexpressed in many types of cancer, including bladder cancer [14], prostate cancer [15], breast cancer [16], head and neck squamous cell carcinoma [17], and lung cancer [18] as well as RCC cell lines [19,20]. The overexpression and functions of PKC ϵ imply its potential as a therapeutic target of cancer.

In this study, we detected the expression of PKC ϵ in 128 human primary RCC tissues and 15 normal tissues and found that PKC ϵ expression was up-regulated in these tumors and correlated with tumor grade. Furthermore, PKC ϵ regulated cell proliferation, colony formation, invasion, migration, and chemo-resistance of clear cell RCC cells. Those results suggest that PKC ϵ is

* Correspondence: junxingchen@hotmail.com; qiusp2009@live.cn

† Contributed equally

¹Department of Urology, the First Affiliated Hospital, Sun Yat-Sen University, Guangzhou (510080), China

Full list of author information is available at the end of the article

crucial for survival of clear cell RCC cells and may serve as a therapeutic target of RCC.

Methods

Samples

We collected 128 specimens of resected RCC and 15 specimens of pericancerous normal renal tissues from the First Affiliated Hospital of the Sun Yat-sen University (Guangzhou, China). All RCC patients were treated by radical nephrectomy or partial resection. Of the 128 RCC samples, 10 were papillary RCC, 10 were chromophobe RCC, and 108 were clear cell RCC according to the 2002 AJCC/UICC classification. The clear cell RCC samples were from 69 male patients and 39 female patients at a median age of 56.5 years (range, 30 to 81 years). Tumors were staged according to the 2002 TNM staging system [21] and graded according to the Fuhrman four-grade system [22]. Informed consent was obtained from all patients to allow the use of samples and clinical data for investigation. This study was approved by the Ethics Council of the Sun Yat-sen University for Approval of Research Involving Human Subjects.

Cell culture

Five human RCC cell lines 769P, 786-O, OS-RC-2, SN12C, and SKRC39 were used in this research. Clear cell RCC cell lines 769P and 786-O were purchased from the American Type Culture Collection (Rockville, MD); RCC cell lines OS-RC-2, SN12C, and SKRC39 were a kind gift from Dr. Zhuowei Liu (Department of Urology, Sun Yat-sen University Cancer Center). 769P, 786-O, OS-RC-2, and SKRC39 cells were cultured in RPMI-1640 (Gibco, Carlsbad, California); SN12C cells were maintained in Dulbecco's modified Eagle's medium (DMEM, Gibco) containing 10% fetal calf serum (FCS, Gibco, Carlsbad, California), 1% (v/v) penicillin, and 100 µg/ml streptomycin at 37°C in a 5% CO₂ atmosphere.

Immunohistochemistry and scoring for PKCε expression

All 5-µm thick paraffin sections of tissue samples were deparaffinized with xylene and rehydrated through graded alcohol washes, followed by antigen retrieval by heating sections in sodium citrate buffer (10 mM, pH 6.0) for 30 min. Endogenous peroxidase activity was blocked with 30 min incubation in methanol containing 0.03% H₂O₂. The slides were then incubated in PBS (pH 7.4) containing normal goat serum (dilution 1:10) and subsequently incubated with monoclonal mouse IgG1 anti-PKCε antibody (610085; BD Biosciences, BD, Franklin Lakes, NJ USA) with 1:200 dilution at 4°C overnight. Following this step, slides were treated with biotin-labeled anti-IgG and incubated with avidin-biotin

peroxidase complex. Reaction products were visualized by diaminobenzidine (DAB) staining and Meyer's hematoxylin counterstaining. Negative controls were prepared by replacing the primary antibody with mouse IgG1 (I1904-79G, Stratech Scientific Ltd, UK). Phosphate-buffered saline instead of primary antibody was used for blank controls.

Three independent pathologists blinded to clinical data scored PKCε immunohistochemical staining of all sections according to staining intensity and the percentage of positive tumor cells as follows [23,24]: no staining scored 0; faint or moderate staining in ≤ 25% of tumor cells scored 1; moderate or strong staining in 25% to 50% of tumor cells scored 2; strong staining in ≥ 50% of tumor cells scored 3. For each section, 10 randomly selected areas were observed under high magnification and 100 tumor cells in each area were counted to calculate the proportion of positive cells. Overexpression of PKCε was defined as staining index ≥ 2. Immunohistochemical reactions for all samples were repeated at least three times and typical results were illustrated.

Western blot analysis for PKCε expression

The expression of PKCε in 769P, 786-O, OS-RC-2, SN12C, and SKRC39 cells was detected by Western blot as described previously [25]. Briefly, total proteins were extracted from RCC cell lines and denatured in sodium dodecyl sulfate (SDS) sample buffer, then equally loaded onto 10% polyacrylamide gel. After electrophoresis, the proteins were transferred to a polyvinylidene difluoride membrane. Blots were incubated with the indicated primary antibodies overnight at 4°C and detected with horseradish peroxidase-conjugated secondary antibody. The monoclonal anti-PKCε antibody was used at the dilution of 1:3,000, whereas anti-GAPDH (sc-137179; Santa Cruz Biotechnology, Santa Cruz, CA, USA) was used at the dilution of 1:2,000.

Immunocytochemistry for PKCε expression and location

769P cells were washed with 1× PBS and fixed in 4% paraformaldehyde for 10 min at room temperature, blocked in 0.1% PBS-Tween solution containing 5% donkey serum (v/v) at room temperature for 1 h, and incubated overnight with anti-PKCε antibody (1:300) in blocking solution. Then cells were washed three times for 10 min with 0.1% PBS-Tween and incubated for 1 h with secondary antibody in blocking solution. DyLight488-conjugated AffiniPure donkey anti-mouse IgG (H + L) was used at the dilution of 1:500 (715485151, Jackson ImmunoResearch Europe, Newmarket, Suffolk, UK). After incubation, cells were washed three times with 0.1% PBS-Tween, counterstained with Hoechst 33342, and mounted for confocal microscopy.

The expression and location of PKC ϵ in cells were observed under a fluorescent microscope.

RNA interference (RNAi) to knockdown PKC ϵ in 769P cells

As described in literature [26-28], 769P cells were transfected with small interfering RNA (siRNA) against PKC ϵ (sc-36251) and negative control siRNA (sc-37007) by Lipofectamine 2000 transfection reagent and Opti-MEMTM (Invitrogen, Carlsbad, CA, USA) according to the manufacturer's protocol. All siRNAs were obtained from Santa Cruz Biotechnology. Briefly, 1×10^5 769P cells were plated in each well of 6-well plates and cultured to reach a 90% confluence. Cells were then transfected with siRNA by using the transfection reagent in serum-free medium. Total cellular proteins were isolated at 48 h after transfection. PKC ϵ expression was monitored by reverse transcription-polymerase chain reaction (RT-PCR) and Western blot using the anti-PKC ϵ antibody mentioned above.

Reverse transcription-polymerase chain reaction

Total RNA was isolated from 769P cells transfected with PKC ϵ siRNA or control siRNA, or from untransfected cells using TRIzol Reagent (Invitrogen) as per the manufacturer's protocol, and subjected to reverse transcription using reverse transcriptase Premix Ex Taq (Takara, Otsu, Japan). The sequences of PKC ϵ primers used for PCR were as follows: forward, 5'-ATGGTAGTGTTCAATGGCCTTCT-3'; reverse, 5'-TCAGGGCATCAGGTCTTCAC-3'. The sequences of internal control glyceraldehyde-3-phosphate dehydrogenase (GAPDH) were as follows: forward, 5'-ATGTCGTGGAGTCTACTGGC-3'; reverse, 5'-TGACCTTGCCCACAGCCTTG-3'. PKC ϵ was amplified by 30 cycles of denaturation at 95°C for 1 min, annealing at 60°C for 30 s, extension at 72°C for 2 min, and final extension at 72°C for 8 min. The products were resolved on a 1% agarose gel containing ethidium bromide for electrophoresis.

Colony formation assay

Cell proliferation was assessed by colony formation assay. PKC ϵ siRNA-transfected, control siRNA-transfected, and untransfected 769P cells were seeded in a 6-well plate (1×10^3 cells/well), and cultured in complete medium for 1 week. Cell colonies were then visualized by 0.25% crystal violet. After washing out the dye, colonies containing > 50 cells were counted. The colony formation efficiency (CFE) was the ratio of the colony number to the planted cell number.

Wound-healing assay

Cell migration was evaluated by a scratched wound-healing assay on plastic plate wells. In brief, 769P cells were seeded in a 6-well plate (5×10^5 cells/well) and

grew to confluence. The monolayer culture was scratched with a sterile micropipette tip to create a denuded zone (gap) of constant width and the cell debris with PBS was removed. The initial gap length and the residual gap length at 6, 12, or 24 h after wounding were observed under an inverted microscope (ZEISS AXIO OBSERVER Z1) and photographed. The wound area was measured by the program Image J <http://rsb.info.nih.gov/ij/>. The percentage of wound closure was estimated by $1 - (\text{wound area at Tt} / \text{wound area at T0}) \times 100\%$, where Tt is the time after wounding and T0 is the time immediately after wounding.

Invasion assay

Cell invasion was assessed using the CHEMICON cell invasion assay kit (Millipore, Billerica, MA, USA) according to the manufacturer's instructions. In brief, 300 μ l of warm serum-free medium was added into the interior of each insert (8 μ m pore size) to rehydrate the extracellular matrix (ECM) layer for 2 h at room temperature, then it was replaced with 300 μ l of prepared serum-free suspension of untransfected 769P cells, or cells transfected with PKC ϵ siRNA or control siRNA (5×10^5 cells/ml); 500 μ l of medium containing 10% fetal bovine serum was added to the lower chamber of the insert. Cells were incubated at 37°C in a 5% CO₂ atmosphere for 24 h. After then, non-invading cells in the interior of the inserts were gently removed with a cotton-tipped swab; invasive cells on the lower surface of the inserts were stained with the staining solution for 20 min and counted under a microscope. All experiments were performed in triplicate.

Drug sensitivity assay

At 48 h after siRNA transfection, transfected and untransfected cells were seeded into a 96-well plate at a density of 5×10^3 cells/well. After 24 h, cells were treated with various doses of sunitinib or 5-fluorouracil (Sigma, St Louis, MO, USA) for additional 48 h. Cell viability was measured by the MTT assay following the manufacturer's instructions. All experiments were performed in triplicate.

Caspase-3 activity assay

The activity of caspase-3 was determined using the caspase-3 activity kit (Beyotime, Haimen, China), based on the ability of caspase-3 to change acetyl-Asp-Glu-Val-Asp p-nitroanilide (Ac-DEVD-pNA) into a yellow formazan product p-nitroaniline (pNA) [29,30]. According to the manufacturer's protocol, cell lysates of transfected and untransfected 769P cells after drug treatment as described above were centrifuged at $12,000 \times g$ for 15 min at 4°C, and protein concentrations were determined by Bradford protein assay. Cellular extracts (30 μ g) were

incubated in a 96-well microtitre plate with 10 μ l Ac-DEVD-pNA (2 mM) for 6 h at 37°C. Then caspase-3 activity was quantified in the samples with a microplate spectrophotometer (NanoDrop 2000c, Thermo Fisher Scientific Inc., USA) by the absorbance at a wavelength of 405 nm. All experiments were performed in triplicate.

Statistical analysis

Statistical analysis was performed using the SPSS 13.0 software. The relationship between PKC ϵ expression and the clinicopathologic features of RCC was assessed by the Fischer's exact test. Continuous data are expressed as mean \pm standard deviation. Statistical significance was analyzed by one-way

analysis of variance (ANOVA) followed by Bonferro-ni's post-hoc test, with values of $P < 0.05$ considered statistically significant.

Results

PKC ϵ expression in renal tissues

The expression of PKC ϵ protein in 15 specimens of normal renal tissues and 128 specimens of RCC was detected by immunohistochemistry with an anti-PKC ϵ monoclonal antibody. PKC ϵ expression was weak in normal renal tissues, but strong in both cytoplasm and nuclei of RCC cells (Figure 1). The level of PKC ϵ overexpression was significantly higher in RCC than in normal tissues (63.3% vs. 26.7%, $P = 0.006$). When stratified

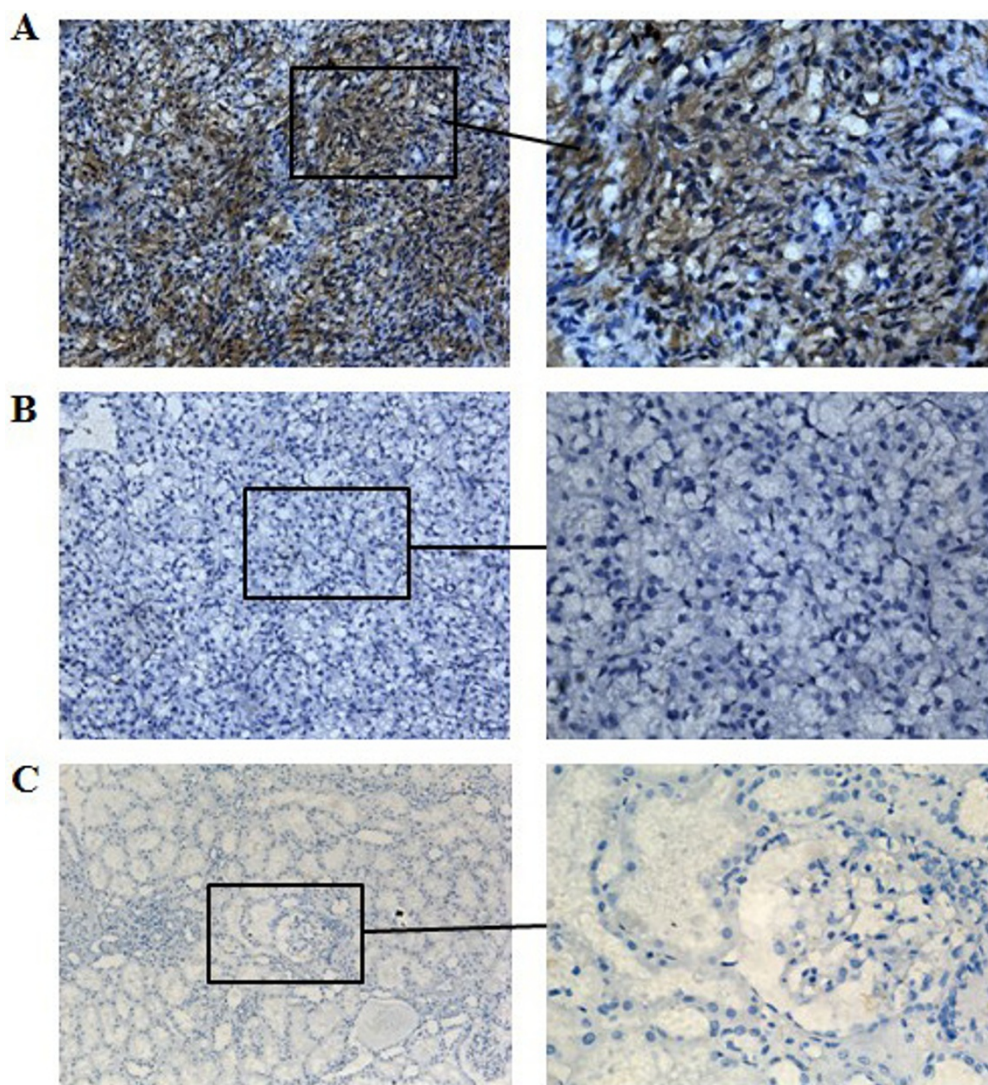


Figure 1 Immunohistochemical staining of PKC ϵ in tissue specimens. PKC ϵ is overexpressed in both cytoplasm and nuclei of clear cell renal cell carcinoma (RCC) cells (A). Primary antibody isotype control (B) and normal renal cells (C) show no or minimal staining. The original magnification was $\times 200$ for left panels and $\times 400$ for right panels.

by pathologic type, no significant difference was observed among clear cell, papillary, and chromophobe RCCs (62.0% vs. 60.0% and 80.0%, $P = 0.517$). PKC ϵ overexpression showed no relationship with the sex and age of patients with clear cell RCC (both $P > 0.05$), but was related with higher T stage ($P < 0.05$) and higher Fuhrman grade ($P < 0.01$) (Table 1).

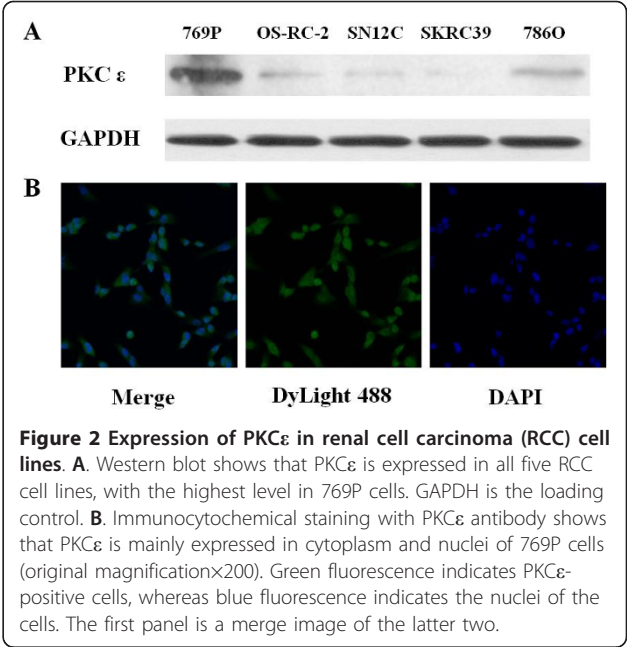
PKC ϵ expression in renal cell cancer cell lines

We detected the expression of PKC ϵ in five RCC cell lines using Western blot. PKC ϵ was expressed in all five RCC cell lines at various levels, with the maximum level in clear cell RCC cell line 769P (Figure 2A). Immunocytochemical staining showed that PKC ϵ was mainly expressed in both cytoplasm and nuclei, sometimes on the membrane, of 769P cells (Figure 2B).

Effects of PKC ϵ on proliferation, migration, and invasion of 769P cells

To examine the functions of PKC ϵ , we knocked down PKC ϵ by transfecting PKC ϵ siRNA into 769P cells. The mRNA and protein expression of PKC ϵ was significantly weaker in PKC ϵ siRNA-transfected cells than in control siRNA-transfected cells and untransfected cells (Figure 3A and 3B). The colony formation assay revealed that cell colony formation efficiency were lower in PKC ϵ siRNA-transfected cells than in control siRNA-transfected and untransfected cells [(29.6 \pm 1.4)% vs. (60.9 \pm 1.5)% and (50.9 \pm 1.1)%, $P < 0.05$], suggesting that PKC ϵ may be important for the growth and survival of RCC cells.

The wound-healing assay also demonstrated significant cell migration inhibition in PKC ϵ siRNA-transfected cells compared with control siRNA-transfected and untransfected cells at 24 h after wounding [wound



closure ratio: (42.6 \pm 5.3)% vs. (77.1 \pm 4.1)% and (87.2 \pm 5.5)%, $P < 0.05$] (Figure 3C). The CHEMICON cell invasion assay demonstrated that the number of invading cells was significantly decreased in PKC ϵ siRNA group compared with control siRNA and blank control groups (120.9 \pm 8.1 vs. 279.0 \pm 8.3 and 308.5 \pm 8.8, $P < 0.01$) (Figure 3D). Our data implied that PKC ϵ knockdown also inhibited cell migration and invasion *in vitro*.

Knockdown of PKC ϵ sensitizes 769P cells to chemotherapy *in vitro*

As PKC ϵ is involved in drug resistance in some types of cancer and adjuvant chemotherapy is commonly used to treat RCC, we tested whether PKC ϵ is also involved in drug response of RCC cell lines. Both siRNA-transfected and untransfected 769P cells were treated with either sunitinib or 5-fluorouracil. The survival rates of 769P cells after treatment with Sunitinib and 5-fluorouracil were significantly lower in PKC ϵ siRNA group than in control siRNA and blank control groups (all $P < 0.01$) (Figure 4).

Caspase-3 is the final executor of apoptotic DNA damage, and its activity is a characteristic of apoptosis [10]. We next examined cell apoptosis after siRNA transfection and treatment with cytotoxic drug sunitinib or 5-fluorouracil. At 48 h, the caspase-3 activity was significantly higher in PKC ϵ siRNA-transfected cells, either with or without drug treatment, than in untransfected cells ($P < 0.01$) (Figure 5A), and was significantly higher in the cells underwent both siRNA transfection and

Table 1 PKCε overexpression in human clear cell renal cell carcinoma tissues				
Group	Cases	PKCε overexpression		P value
		(-)	(+)	
Sex				
Men	69	24	45	0.365
Women	39	17	22	
Age				
≤ 55 years	43	16	27	0.599
>55 years	65	21	44	
T stage				
T ₁ /T ₂	89	38	51	0.028
T ₃ /T ₄	19	3	16	
Fuhrman grade				
G ₁ /G ₂	86	39	47	0.002
G ₃ /G ₄	22	2	20	

PKC ϵ , protein kinase C epsilon.

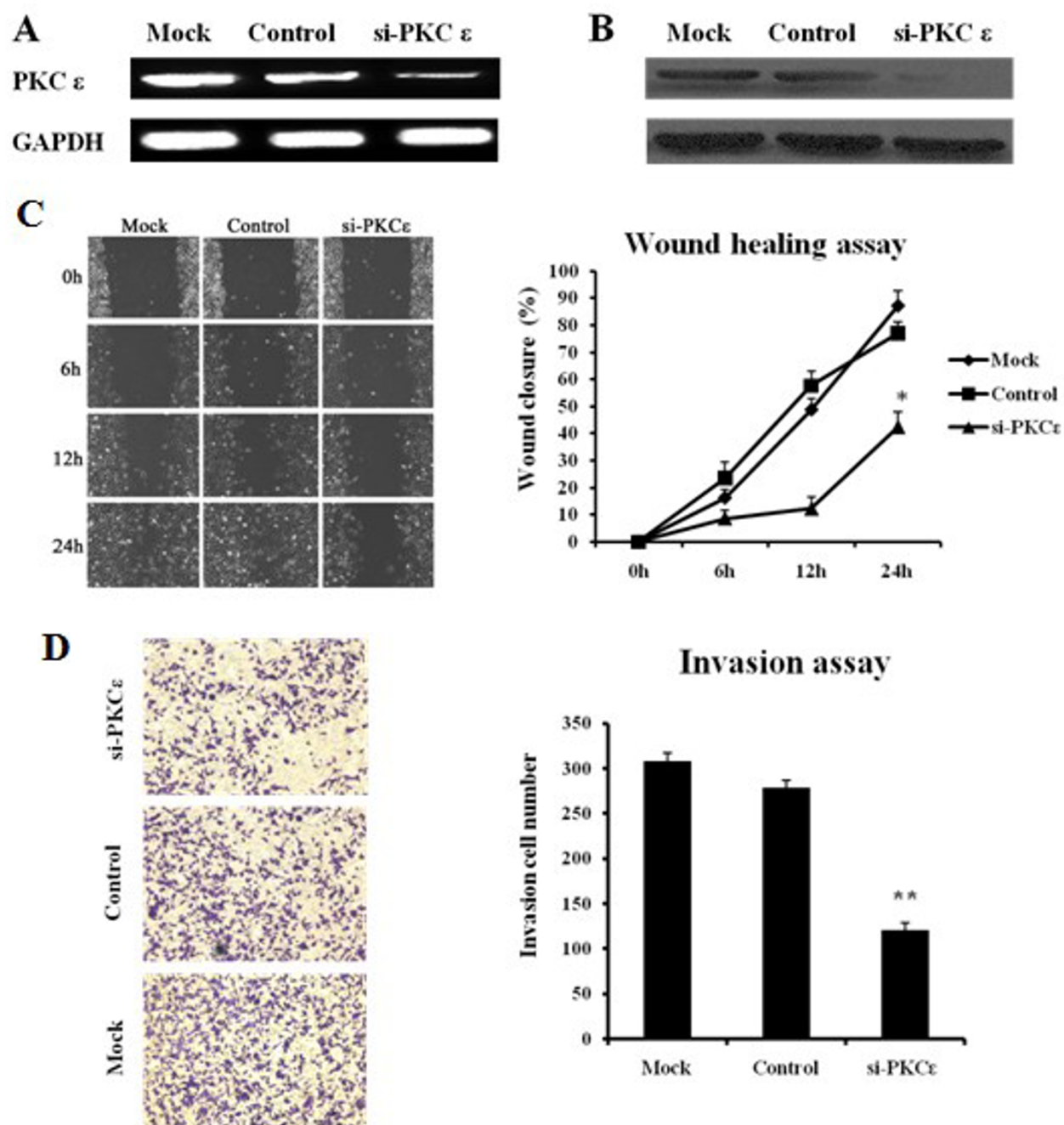


Figure 3 Effects of PKCε knockdown on migration, and invasion of 769P cells. 769P cells were transfected with PKCε small interfering RNA (siRNA) or control siRNA; untransfected cells were used as blank control. GAPDH was used as internal control. Both reverse transcription-polymerase chain reaction (A) and Western blot (B) show that PKCε expression is inhibited after PKCε RNAi. C. The wound-healing assay shows a significant decrease in the wound healing rate of 769P cells after PKCε siRNA transfection (*, $P < 0.05$). D. Invasion assay shows a significant decrease in invaded 769P cells after PKCε siRNA transfection (**, $P < 0.01$).

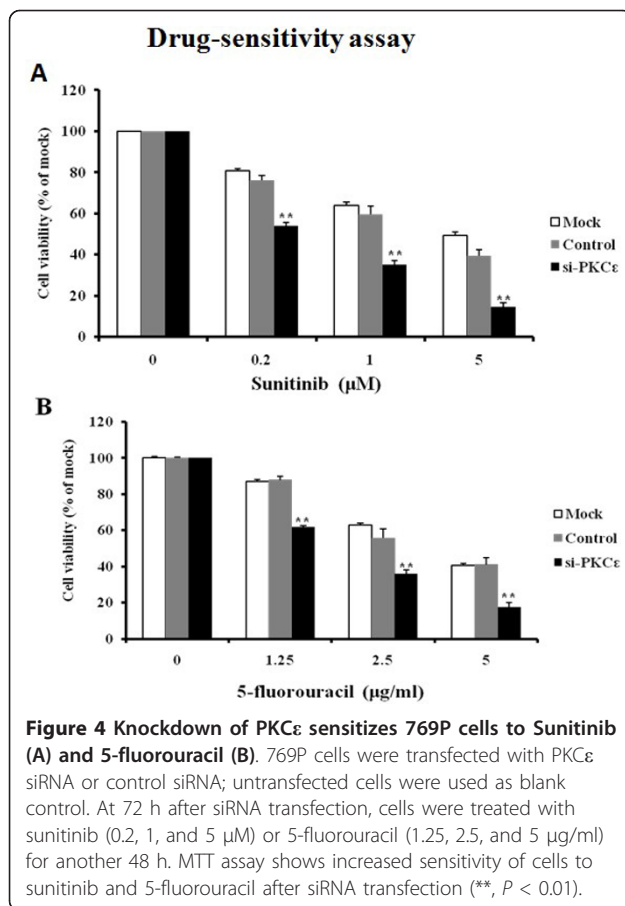


Figure 4 Knockdown of PKCε sensitizes 769P cells to Sunitinib (A) and 5-fluorouracil (B). 769P cells were transfected with PKCε siRNA or control siRNA; untransfected cells were used as blank control. At 72 h after siRNA transfection, cells were treated with sunitinib (0.2, 1, and 5 μM) or 5-fluorouracil (1.25, 2.5, and 5 μg/ml) for another 48 h. MTT assay shows increased sensitivity of cells to sunitinib and 5-fluorouracil after siRNA transfection (**, $P < 0.01$).

drug treatment than in those underwent only drug treatment ($P < 0.05$) (Figure 5B), suggesting that PKCε may contribute to the resistance of clear cell RCC cells to cytotoxic drugs.

Discussion

Increasing evidences indicate that PKCε is overexpressed in various tumor tissues and functions as a transforming oncogene [14-20]. To explore the oncogenic potential of PKCε, Mischak et al. [31] overexpressed PKCε in NIH 3T3 fibroblasts and observed accelerated growth of cells with PKCε overexpression. In addition, tumors were developed in all mice injected with PKCε-overexpressing NIH 3T3 cells. In the same year, Cacace et al. [32] confirmed the oncogenic role of PKCε in fibroblasts. Similarly, Perletti *et al.* [33] found that PKCε overexpression in colonic epithelial cells led to a metastatic phenotype, including morphological changes, increased anchorage-independent growth and tumorigenesis in a xenograft model. We also found that PKCε was overexpressed in RCC tissues as compared with that in normal renal tissues and that PKCε was closely related to higher grades of clear cell RCC. PKCε was also expressed in all five human RCC cell lines used in our study.

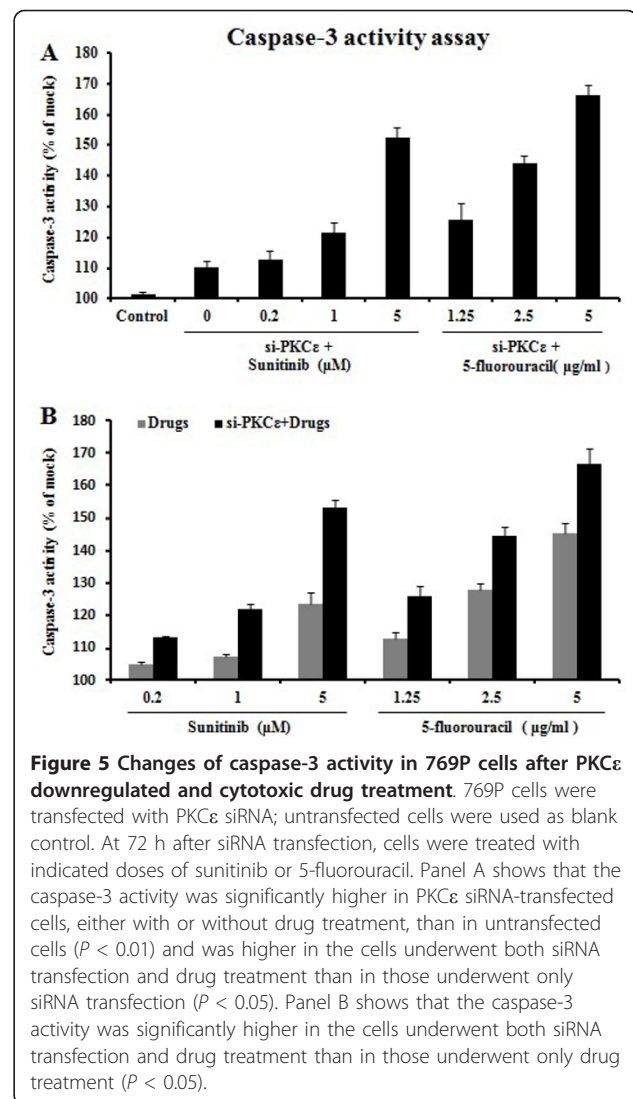


Figure 5 Changes of caspase-3 activity in 769P cells after PKCε downregulated and cytotoxic drug treatment. 769P cells were transfected with PKCε siRNA; untransfected cells were used as blank control. At 72 h after siRNA transfection, cells were treated with indicated doses of sunitinib or 5-fluorouracil. Panel A shows that the caspase-3 activity was significantly higher in PKCε siRNA-transfected cells, either with or without drug treatment, than in untransfected cells ($P < 0.01$) and was higher in the cells underwent both siRNA transfection and drug treatment than in those underwent only siRNA transfection ($P < 0.05$). Panel B shows that the caspase-3 activity was significantly higher in the cells underwent both siRNA transfection and drug treatment than in those underwent only drug treatment ($P < 0.05$).

PKCε has been shown to regulate many cellular processes, including cell proliferation, migration, invasion, chemo-resistance, apoptosis, and differentiation [9-12]. Multiple mechanisms are involved in PKCε-regulated tumorigenesis. For example, PKCε promotes cell proliferation and survival by regulating the Ras signaling pathway, which is a well characterized signaling pathway in cancer biology [10,34]. PKCε expression is related to the activation of cyclin D1 promoter, a downstream effects of Ras signaling, and to enhanced cell growth [9-11]. In addition, PKCε plays a role in anti-apoptotic signaling pathways through interacting with caspases and Bcl-2 family members [35,36], and exerts its pro-survival effects by activating Akt/PKB [27,37]. These mechanisms may explain the inhibited growth of RCC cells by PKCε knockdown in our study.

Like in other cancer types, relapse and metastasis are the main causes of failure of surgical operation in

treating clear cell RCC. Patients with RCC response to postoperative adjuvant chemotherapy at various levels and usually cannot achieve expected outcomes [3]. The phenotype of tumor metastasis presents with promotion of cell proliferation, escape from apoptosis, and dysregulation of cellular adhesion and migration. The invasion of tumor cells to surrounding tissues and spreading to distal sites rely on cell migration ability. Cell migration, a complex event, depends on the coordinated remodeling of the actin cytoskeleton, regulated assembly, and turnover of focal adhesion [11]. Interestingly, PKC ϵ contains an actin-binding domain [12] and promotes F-actin assembly in a cell-free system, indicating that PKC ϵ modulates cell migration via actin polymers. In addition, PKC ϵ has been observed to translocate to the cell membrane during the formation of focal adhesions [38] and to reverse the effect of non-signaling β 1-integrin molecules in inhibiting cell spreading [39]. PKC ϵ -driven cell migration was shown to be mediated, at least in part, by activating downstream small Rho GTPases, especially RhoA and/or RhoC [17]. We found that silencing PKC ϵ by RNAi decreased migration and invasion of clear cell RCC cells *in vitro*, suggesting that PKC ϵ may be one of the potential treatment targets for this disease. Additionally, PKC ϵ is also cleaved by caspases in response to several apoptotic stimuli including chemotherapeutic agents. PKC ϵ is a substrate for caspase-3 as evidenced by caspase-3-caused PKC ϵ cleavage and the inhibition of PKC ϵ cleavage by a cell permeable inhibitor of caspase-3 [40]. PKC ϵ has been shown to regulate apoptosis mediated by either DNA damage or receptor [10]. PKC ϵ up-regulation was associated with chemoresistance of non-small cell lung cancer (NSCLC) cell lines, whereas chemosensitivity was proved in PKC ϵ -knockdown SCLC cells [41]. In addition, PKC ϵ was reported to mediate with induction of the drug-resistance gene P-glycoprotein in LNCaP cells [42]. In our study, PKC ϵ knockdown enhanced the activity of pro-apoptotic gene caspase-3 and sensitized 769P cells to chemotherapy, indicating the association between PKC ϵ and chemosensitivity of RCC.

Conclusions

Our results confirm the role of PKC ϵ as an oncogene in RCC, especially in the subtype of clear cell, suggesting that PKC ϵ might be a potential treatment target for this disease, which warrants verification in further studies.

Acknowledgements

This work was supported by grants from the National Natural Science Foundation of China (No. 30872584, 81071760, 30772503); Guangdong Natural Science Foundation (No. 8251008901000018); Sun Yat-sen Innovative Talents Cultivation Program for Excellent Tutors (No. 80000-3126205); and

Science and Technology Planning Project of Guangdong Province, China (No. 2011B050400021, 2008B080701021).

Author details

¹Department of Urology, the First Affiliated Hospital, Sun Yat-Sen University, Guangzhou (510080), China. ²Research Center for Clinical Laboratory Standard, Zhongshan Medical School, Sun Yat-sen University, Guangzhou (510080), China. ³Pulmonary disease institute, Guangzhou Chest Hospital Pulmonary Disease Institute, Guangzhou (510095), China. ⁴Department of Urology, Sun Yat-Sen University Cancer Center, Guangzhou (510060), China.

Authors' contributions

JTZ, JCP and CQM evaluated the immunostainings. BH have made substantial contributions to acquisition of data. XBL, SJG and ZW performed the statistical analysis. BH, JXC and SPQ participated in the design of the study. BH and KYC drafted the manuscript. XPM and SPQ revised the manuscript. All authors read and approved the final manuscript.

Competing interests

The authors declare that they have no competing interests.

Received: 16 August 2011 Accepted: 28 September 2011

Published: 28 September 2011

References

- Jemal A, Siegel R, Xu J, Ward E: **Cancer statistics, 2010.** *CA Cancer J Clin* 2010, **60**:277-300.
- Klatte T, Pantuck AJ, Kleid MD, Belldegrun AS: **Understanding the natural biology of kidney cancer: implications for targeted cancer therapy.** *Rev Urol* 2007, **9**:47-56.
- Finley DS, Pantuck AJ, Belldegrun AS: **Tumor biology and prognostic factors in renal cell carcinoma.** *Oncologist* 2011, **16**:4-13.
- Jaken S: **Protein kinase C isozymes and substrates.** *Curr Opin Cell Biol* 8(1996):168-173.
- Newton AC: **Regulation of the ABC kinases by phosphorylation: protein kinase C as a paradigm.** *Biochem J* 2003, **370**:361-371.
- Parker PJ, Parkinson SJ: **AGC protein kinase phosphorylation and protein kinase C.** *Biochem Soc Trans* 2001, **29**:860-863.
- Griner EM, Kazanietz MG: **Protein kinase C and other diacylglycerol effectors in cancer.** *Nat Rev Cancer* 2007, **7**:281-294.
- Gutcher I, Webb PR, Anderson NG: **The isoform-specific regulation of apoptosis by protein kinase C.** *Cell Mol Life Sci* 2003, **60**:1061-1070.
- Gorin MA, Pan Q: **Protein kinase C ϵ : an oncogene and emerging tumor biomarker.** *Mol Cancer* 2009, **8**:9.
- Basu A, Sivaprasad U: **Protein kinase C ϵ makes the life and death decision.** *Cell Signal* 2007, **19**:1633-1642.
- Akita Y: **Protein kinase C ϵ : multiple roles in the function of and signaling mediated by, the cytoskeleton.** *FEBS J* 2008, **275**:3995-4004.
- Akita Y: **Protein kinase C ϵ (PKC ϵ): its unique structure and function.** *J Biochem* 2002, **132**:847-852.
- Totoń E, Ignatowicz E, Skrzeczowska K, Rybczyńska M: **Protein kinase C ϵ as a cancer marker and target for anticancer therapy.** *Pharmacol Rep* 2011, **63**:19-29.
- Varga A, Czifra G, Tallai B, Németh T, Kovács I, Kovács L, Biró T: **Tumor grade-dependent alterations in the protein kinase C isoform pattern in urinary bladder carcinomas.** *Eur Urol* 2004, **46**:462-465.
- Wu D, Foreman TL, Gregory CW, McJilton MA, Wescott GG, Ford OH, Alvey RF, Mohler JL, Terrian DM: **Protein kinase cepsilon has the potential to advance the recurrence of human prostate cancer.** *Cancer Res* 2002, **62**:2423-2429.
- Pan Q, Bao LW, Kleer CG, Sabel MS, Griffith KA, Teknos TN, Merajver SD: **Protein kinase C epsilon is a predictive biomarker of aggressive breast cancer and a validated target for RNA interference anticancer therapy.** *Cancer Res* 2005, **65**:8366-8371.
- Pan Q, Bao LW, Teknos TN, Merajver SD: **Targeted disruption of protein kinase C epsilon reduces cell invasion and motility through inactivation of RhoA and RhoC GTPases in head and neck squamous cell carcinoma.** *Cancer Res* 2006, **66**:9379-9384.
- Bae KM, Wang H, Jiang G, Chen MG, Lu L, Xiao L: **Protein kinase C epsilon is overexpressed in primary human non-small cell lung cancers and functionally required for proliferation of non-small cell lung**

- cancer cells in a p21/Cip1-dependent manner. *Cancer Res* 2007, **67**:6053-6063.
19. Brenner W, Benzing F, Gudejko-Thiel J, Fischer R, Färber G, Hengstler JG, Seliger B, Thüroff JW: Regulation of beta1 integrin expression by PKCepsilon in renal cancer cells. *Int J Oncol* 2004, **25**:1157-1163.
 20. Engers R, Mrzyk S, Springer E, Fabbro D, Weissgerber G, Gernharz CD, Gabbert HE: Protein kinase C in human renal cell carcinomas: role in invasion and differential isoenzyme expression. *Br J Cancer* 2000, **82**:1063-1069.
 21. Green FL, Page DL, Fleming ID, *et al*: AJCC Cancer Staging Manual. Springer: New York, 6 2002.
 22. Fuhrman SA, Lasky LC, Limas C: Prognostic significance of morphologic parameters in renal cell carcinoma. *Am J Surg Pathol* 1982, **6**:655-663.
 23. Yamada S, Yanamoto S, Kawasaki G, Rokutanda S, Yonezawa H, Kawakita A, Nemoto TK: Overexpression of CRKII increases migration and invasive potential in oral squamous cell carcinoma. *Cancer Letters* 2011, **303**:84-91.
 24. Fu L, Qin YR, Xie D, Chow HY, Ngai SM, Kwong DL, Li Y, Guan XY: Identification of alpha-actinin 4 and 67 kDa laminin receptor as stage-specific markers in esophageal cancer via proteomic approaches. *Cancer* 2007, **110**:2672-2681.
 25. Guo S, Mao X, Chen J, Huang B, Jin C, Xu Z, Qiu S: Overexpression of Pim-1 in bladder cancer. *J Exp Clin Cancer Res* 2010, **29**:161.
 26. Pedram A, Razandi M, Wallace DC, Levin ER: Functional estrogen receptors in the mitochondria of breast cancer cells. *Mol Biol Cell* 2006, **17**:2125-37.
 27. Lu D, Huang J, Basu A: Protein kinase C epsilon activates protein kinase B/Akt via DNA-PK to protect against tumor necrosis factor-alpha-induced cell death. *J Biol Chem* 2006, **281**:22799-22807.
 28. Hu B, Shen B, Su Y, Geard CR, Balajee AS: Protein kinase C epsilon is involved in ionizing radiation induced bystander response in human cells. *Int J Biochem Cell Biol* 2009, **41**:2413-2421.
 29. Wei X, Juan ZX, Min FX, Nan C, Hua ZX, Qing FZ, Zheng L: Recombinant immunotoxin anti-c-Met/PE38KDEL inhibits proliferation and promotes apoptosis of gastric cancer cells. *J Exp Clin Cancer Res* 2011, **30**:67.
 30. Zhao CQ, Liu Da, Li Hai, Jiang LS, Dai LY: Interleukin-1b enhances the effect of serum deprivation on rat annular cell apoptosis. *Apoptosis* 2007, **12**:2155-2161.
 31. Mischak H, Goodnight JA, Kolch W, Martiny-Baron G, Schaechtle C, Kazanietz MG, Blumberg PM, Pierce JH, Mushinski JF: Overexpression of protein kinase C-delta and -epsilon in NIH 3T3 cells induces opposite effects on growth, morphology, anchorage dependence, and tumorigenicity. *J Biol Chem* 1993, **268**:6090-6096.
 32. Cacace AM, Guadagno SN, Krauss RS, Fabbro D, Weinstein IB: The epsilon isoform of protein kinase C is an oncogene when overexpressed in rat fibroblasts. *Oncogene* 1993, **8**:2095-2104.
 33. Perletti GP, Folini M, Lin HC, Mischak H, Piccinini F, Tashjian AH Jr: Overexpression of protein kinase C epsilon is oncogenic in rat colonic epithelial cells. *Oncogene* 1996, **12**:847-854.
 34. Hamilton M, Liao J, Cathcart MK, Wolfman A: Constitutive association of c-N-Ras with c-Raf-1 and protein kinase Cepsilon in latent signaling modules. *J Biol Chem* 2001, **276**:29079-29090.
 35. Sivaprasad U, Shankar E, Basu A: Protein kinase C-epsilon protects MCF-7 cells from TNF-mediated cell death by inhibiting Bax translocation. *Cell Death Differ* 2007, **14**:851-860.
 36. McJilton MA, Van Sikes C, Wescott GG: Protein kinase Cepsilon interacts with Bax and promotes survival of human prostate cancer cells. *Oncogene* 2003, **22**:7958-7968.
 37. Wu D, Thakore CU, Wescott GG, McCubrey JA, Terrian DM: Integrin signaling links protein kinase Cepsilon to the protein kinase B/Akt survival pathway in recurrent prostate cancer cells. *Oncogene* 2004, **23**:8659-8672.
 38. Hernandez RM, Wescott GG, Mayhew MW, McJilton MA, Terrian DM: Biochemical and morphogenic effects of the interaction between protein kinase C-epsilon and actin in vitro and in cultured NIH3T3 cells. *J Cell Biochem* 2001, **83**:532-546.
 39. Berrier AL, Mastrangelo AM, Downward J, Ginsberg M, LaFlamme SE: Activated R-ras, Rac1, PI 3-kinase and PKCepsilon can each restore cell spreading inhibited by isolated integrin beta1 cytoplasmic domains. *J Cell Biol* 2000, **151**:1549-1560.
 40. Hoppe J, Hoppe V, Schafer R: Selective degradation of the PKC-epsilon isoform during cell death in AKR-2B fibroblasts. *Exp Cell Res* 2001, **266**:64-73.
 41. Mayne GC, Murray AW: Evidence that protein kinase Cepsilon mediates phorbol ester inhibition of calphostin C- and tumor necrosis factor-alpha-induced apoptosis in U937 histiocytic lymphoma cells. *J Biol Chem* 1998, **273**:24115-24121.
 42. Flescher E, Rotem R: Protein kinase C epsilon mediates the induction of P-glycoprotein in LNCaP prostate carcinoma cells. *Cell Signal* 2002, **14**:37-43.

doi:10.1186/1756-9966-30-88

Cite this article as: Huang *et al.*: The expression and role of protein kinase C (PKC) epsilon in clear cell renal cell carcinoma. *Journal of Experimental & Clinical Cancer Research* 2011 **30**:88.

Submit your next manuscript to BioMed Central and take full advantage of:

- Convenient online submission
- Thorough peer review
- No space constraints or color figure charges
- Immediate publication on acceptance
- Inclusion in PubMed, CAS, Scopus and Google Scholar
- Research which is freely available for redistribution

Submit your manuscript at
www.biomedcentral.com/submit

